

A basement project with a small footprint makes swift progress with DUO formwork

Customer: Leith Hill Plant

Project type: Basement construction

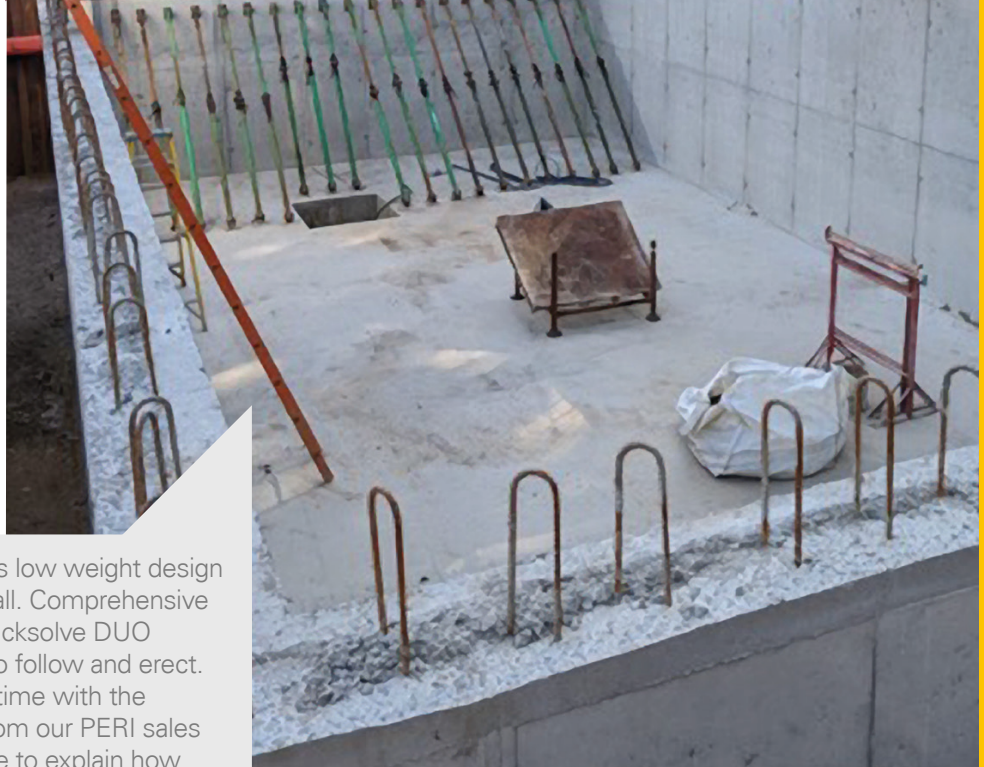
The requirement

Leith Hill Plant required a formwork system to construct a basement with reinforced concrete walls. With sheet piling already installed by the customer, there was limited space to install the formwork. The site's small footprint also restricted crane access, making it challenging to position a traditional formwork system in situ. Our customer needed a lightweight system which could be easily installed and removed without a crane or machinery.

The PERI solution

3D drawings of the wall formwork were created using our Quicksolve DUO Planner, a tool which enables simple formwork layouts and cycles to be designed independent of special engineering services. Comprehensive drawings enabled the customer to understand the weight of the system and how it would be erected to form the basement.

The main benefit was that the site team could erect formwork despite the spatial limitations, on site, as



"We chose to use DUO because of its low weight design which made it incredibly easy to install. Comprehensive drawings of the formwork on the Quicksolve DUO Planner made the design very easy to follow and erect. We saved a considerable amount of time with the system. We also received support from our PERI sales engineer who visited the team on site to explain how to erect the system and answered any questions. I'd recommend the system because of how easy it is to erect - it's very practical for a project with limited space."

ALISTAIR JEFFERSON

Production Manager
Leith Hill Plant

Contact us by email
on sales@peri.ltd.uk
or call **01788 861 600**

Formwork Scaffolding Engineering | www.peri.ltd.uk

